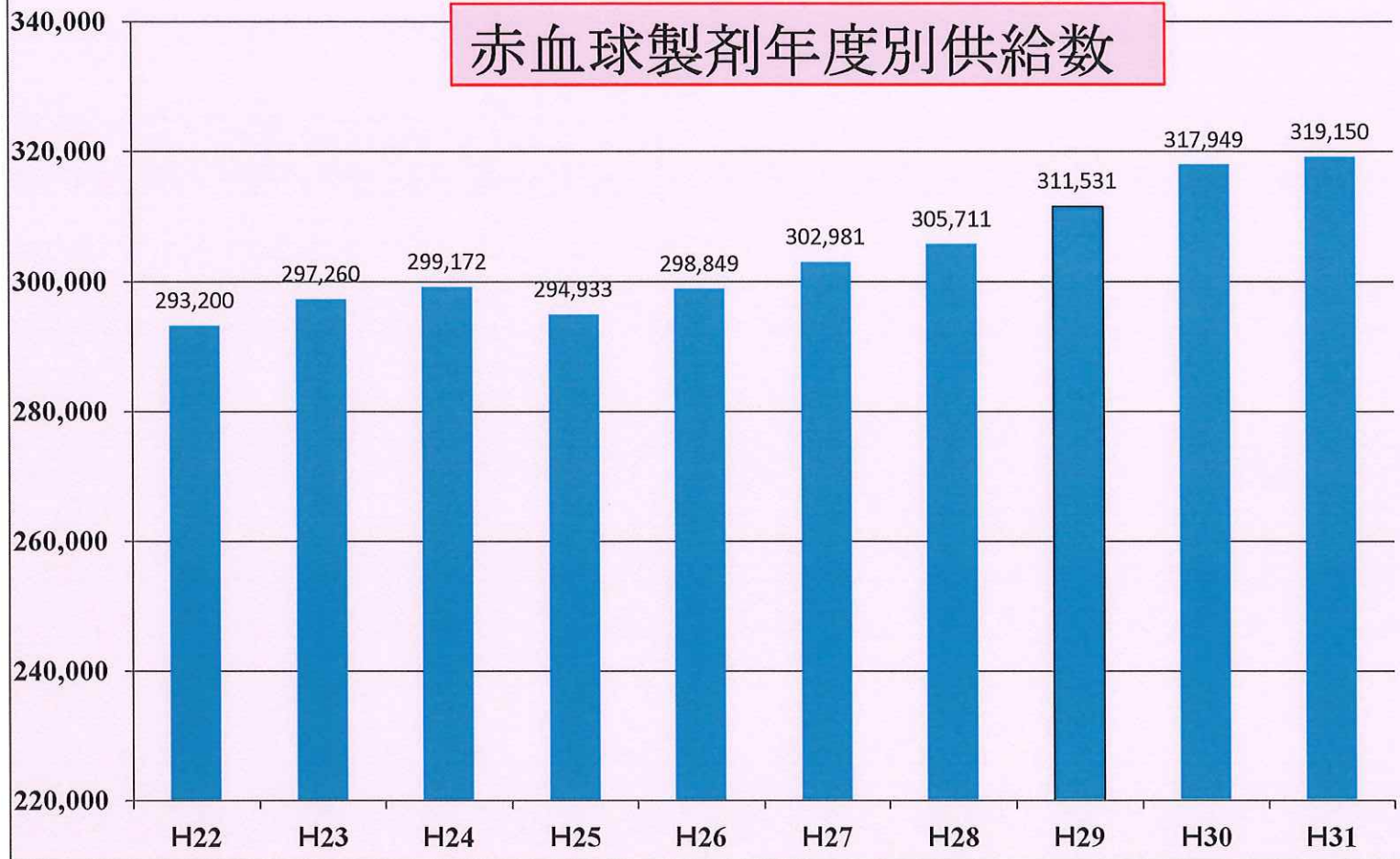


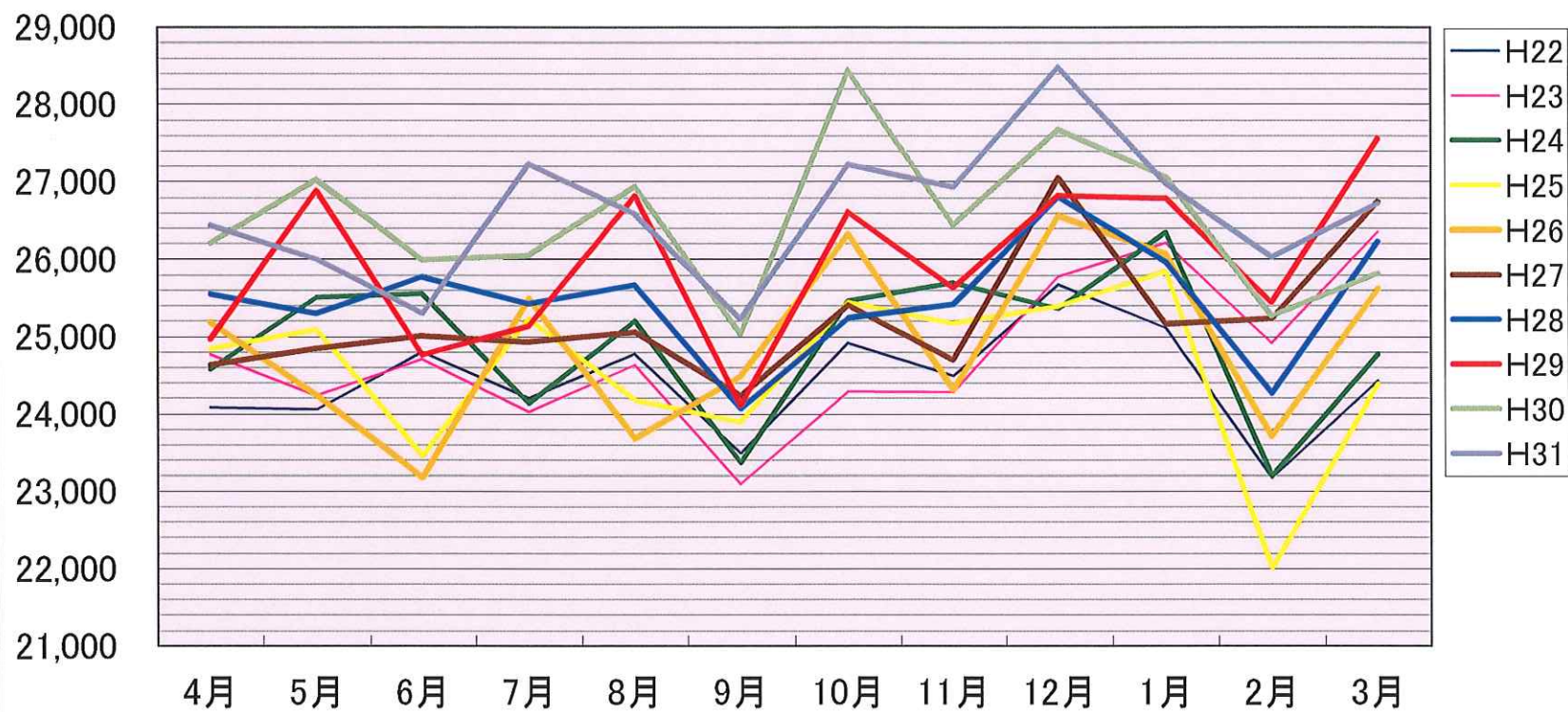
赤血球製剤年度別供給数



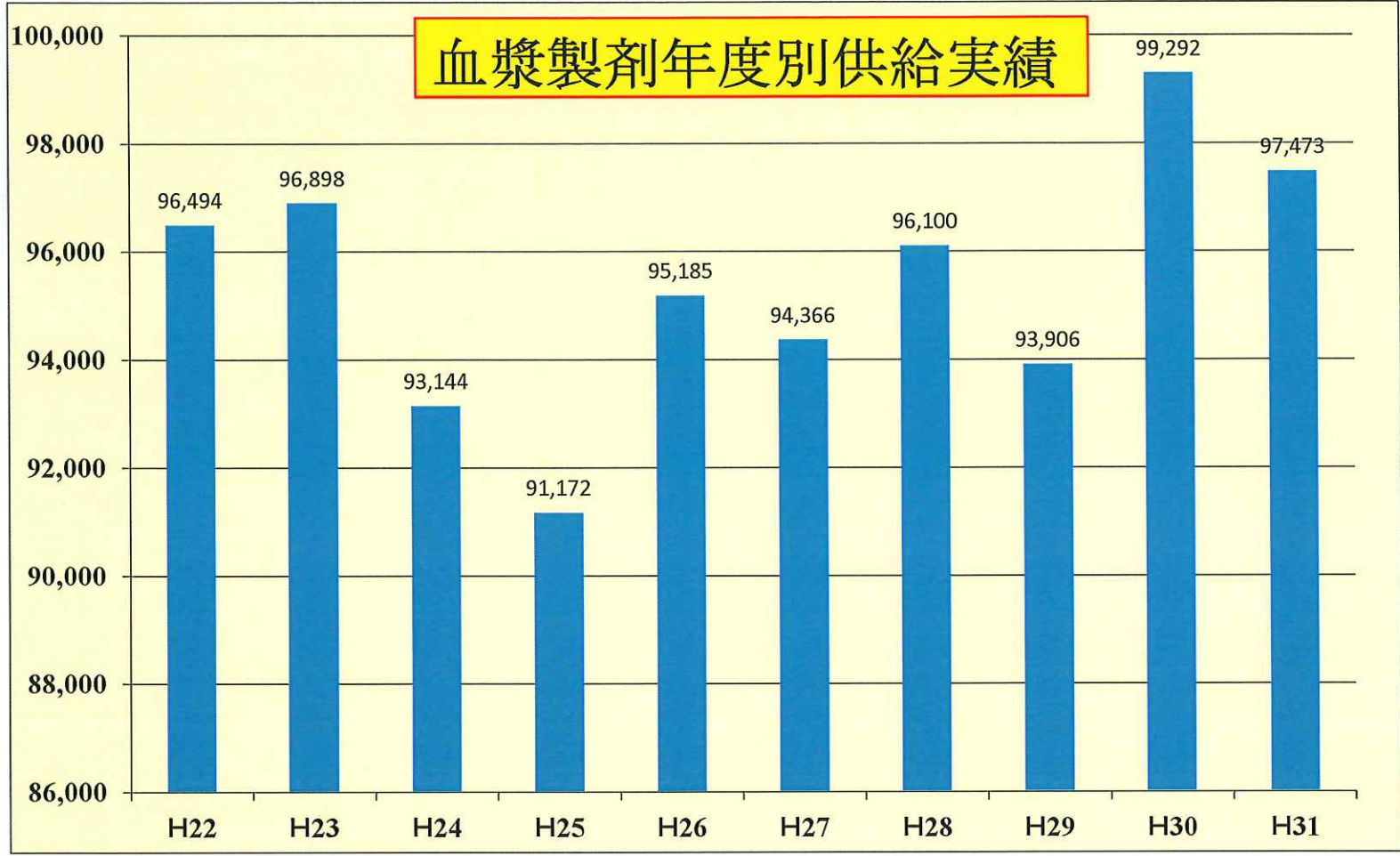
過去実績比較

	4月	5月	6月	7月	8月	9月	10月	11月	12月	1月	2月	3月	合計
H22	24,080	24,056	24,800	24,202	24,777	23,491	24,924	24,494	25,673	25,108	23,172	24,423	293,200
H23	24,767	24,230	24,704	24,017	24,630	23,090	24,290	24,281	25,775	26,212	24,914	26,350	297,260
H24	24,577	25,509	25,553	24,131	25,204	23,374	25,459	25,698	25,363	26,344	23,196	24,764	299,172
H25	24,839	25,085	23,464	25,233	24,178	23,896	25,444	25,169	25,392	25,839	22,010	24,384	294,933
H26	25,187	24,244	23,177	25,490	23,680	24,487	26,327	24,308	26,561	26,066	23,710	25,612	298,849
H27	24,633	24,842	25,009	24,931	25,056	24,231	25,408	24,696	27,053	25,157	25,224	26,741	302,981
H28	25,555	25,303	25,778	25,425	25,667	24,066	25,238	25,417	26,804	25,968	24,265	26,225	305,711
H29	24,969	26,889	24,758	25,133	26,820	24,110	26,613	25,627	26,830	26,790	25,437	27,555	311,531
H30	26,207	27,024	25,992	26,053	26,944	25,031	28,443	26,442	27,676	27,062	25,261	25,814	317,949
H31	26,441	26,000	25,300	27,231	26,582	25,229	27,221	26,932	28,483	26,983	26,024	26,724	319,150

赤血球 実績



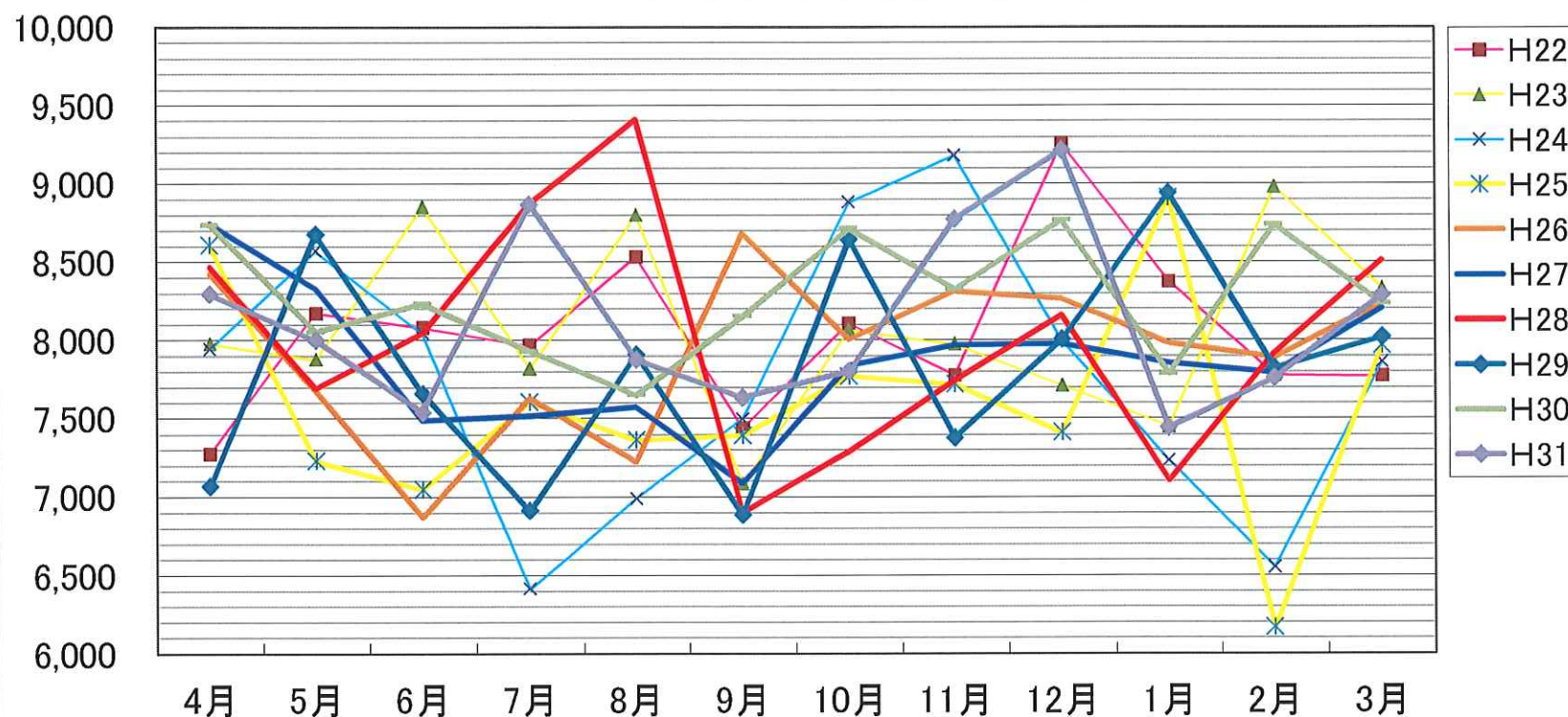
血漿製劑年度別供給実績



過去実績比較

	4月	5月	6月	7月	8月	9月	10月	11月	12月	1月	2月	3月	合計
H22	7,273	8,171	8,078	7,964	8,530	7,437	8,105	7,773	9,252	8,371	7,773	7,767	96,494
H23	7,978	7,877	8,850	7,818	8,797	7,084	8,062	7,971	7,708	7,448	8,976	8,329	96,898
H24	7,944	8,569	8,043	6,412	6,989	7,497	8,881	9,178	7,993	7,230	6,550	7,858	93,144
H25	8,607	7,230	7,046	7,605	7,363	7,390	7,769	7,718	7,407	8,909	6,162	7,966	91,172
H26	8,426	7,675	6,870	7,630	7,226	8,679	8,004	8,313	8,261	7,978	7,887	8,236	95,185
H27	8,745	8,330	7,485	7,515	7,574	7,088	7,837	7,968	7,975	7,855	7,793	8,201	94,366
H28	8,467	7,689	8,044	8,872	9,409	6,899	7,288	7,744	8,156	7,105	7,919	8,508	96,100
H29	7,067	8,675	7,660	6,912	7,910	6,886	8,642	7,376	8,002	8,938	7,820	8,018	93,906
H30	8,734	8,053	8,231	7,929	7,649	8,149	8,710	8,322	8,764	7,784	8,735	8,232	99,292
H31	8,293	8,000	7,539	8,867	7,876	7,634	7,799	8,773	9,210	7,440	7,756	8,286	97,473

血漿製剤年度別実績



血小板製剤年度別供給実績



過去実績比較

	4月	5月	6月	7月	8月	9月	10月	11月	12月	1月	2月	3月	合計
H22	28,255	29,930	27,165	30,410	32,069	28,995	29,356	26,753	32,026	28,400	26,175	30,065	349,599
H23	28,845	28,482	29,102	30,095	28,765	26,820	26,290	28,185	29,440	29,837	28,767	30,165	344,793
H24	27,690	29,920	27,715	28,670	28,460	27,575	29,580	32,245	30,295	29,715	26,205	28,935	347,005
H25	28,526	28,693	27,585	29,630	27,845	27,450	27,192	27,925	29,065	29,570	27,575	29,902	340,958
H26	30,590	27,850	28,285	30,191	27,433	30,730	31,325	29,439	31,990	31,050	30,360	31,440	360,683
H27	29,985	31,200	29,960	32,690	32,035	31,342	32,600	32,535	33,215	30,780	29,125	31,035	376,502
H28	31,420	31,275	31,390	33,185	33,875	30,295	30,575	30,370	33,485	30,965	30,010	33,665	380,510
H29	32,480	35,945	33,260	32,220	32,545	28,715	32,697	30,000	30,260	29,895	28,610	32,110	378,737
H30	30,205	31,825	30,490	31,370	32,645	32,110	34,585	32,330	33,285	29,829	28,075	30,730	377,479
H31	30,990	30,180	27,975	30,650	30,300	30,995	32,035	32,105	32,710	30,810	30,285	31,615	370,650

血小板 実績

